

# INFINISKI MANIFESTO HOUSE 2009 - CONSTRUCTION

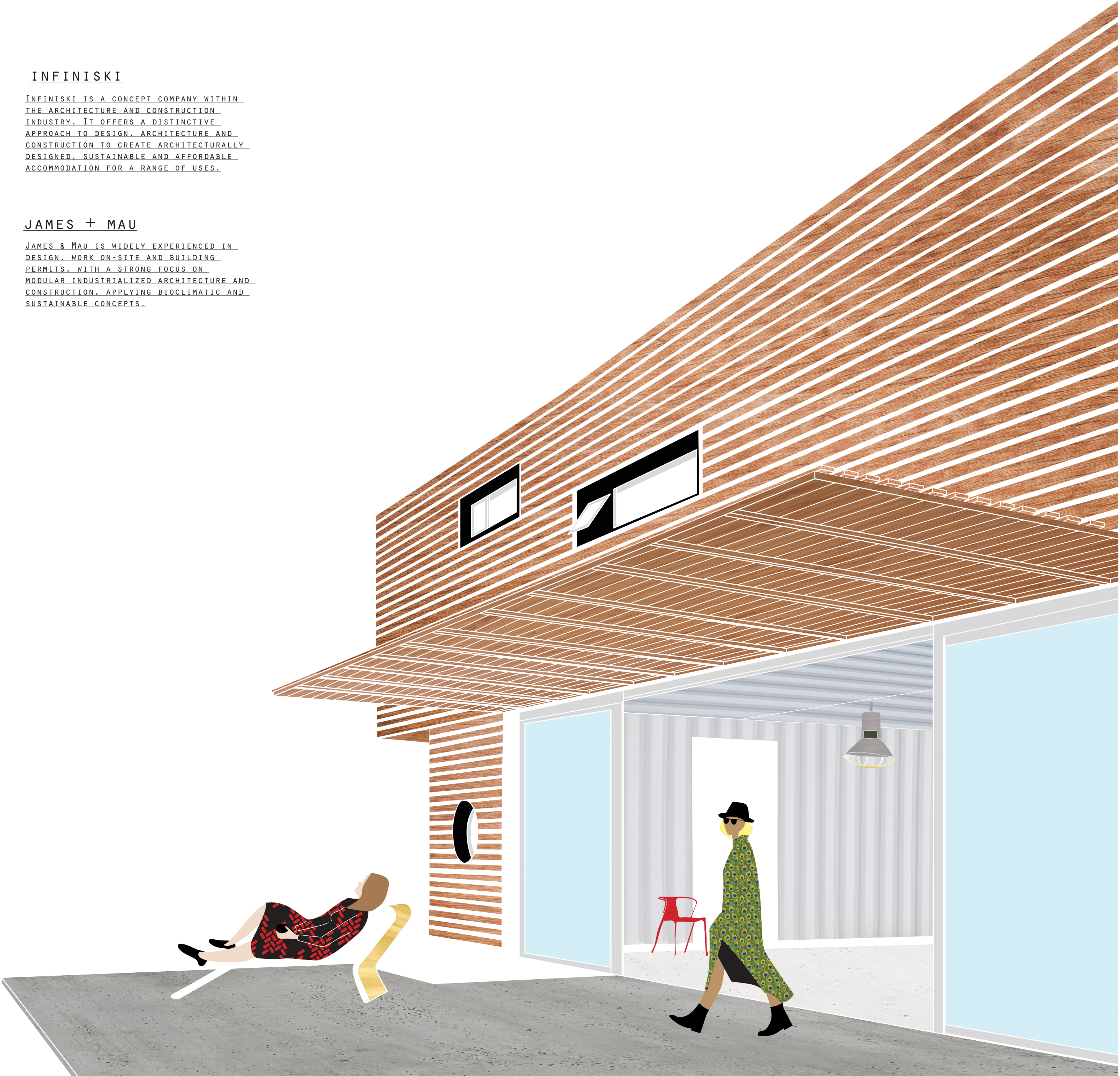
“IT IS NOT BECAUSE OF CLIMATE CHANGE. IT’S BECAUSE I WAS NEVER ABLE TO LEAVE FOOD ON MY PLATE.”

## INFINISKI

INFINISKI IS A CONCEPT COMPANY WITHIN THE ARCHITECTURE AND CONSTRUCTION INDUSTRY. IT OFFERS A DISTINCTIVE APPROACH TO DESIGN, ARCHITECTURE AND CONSTRUCTION TO CREATE ARCHITECTURALLY DESIGNED, SUSTAINABLE AND AFFORDABLE ACCOMMODATION FOR A RANGE OF USES.

## JAMES + MAU

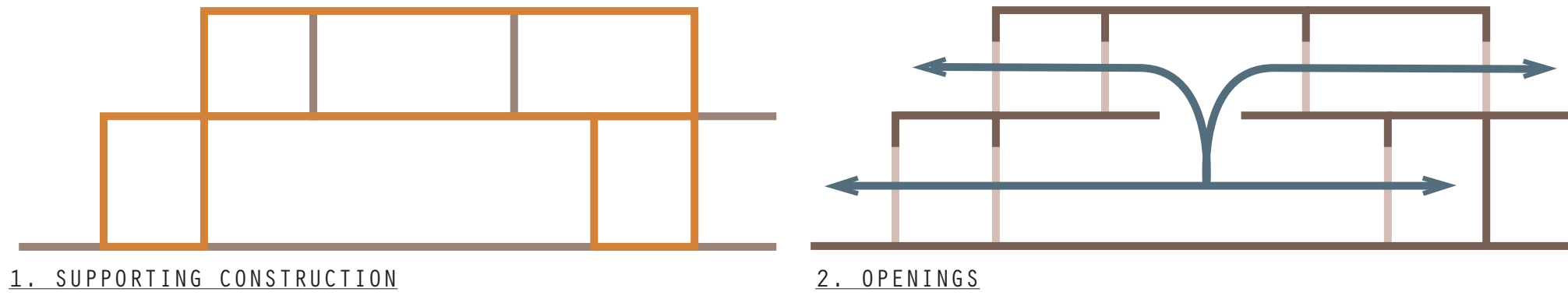
JAMES & MAU IS WIDELY EXPERIENCED IN DESIGN, WORK ON-SITE AND BUILDING PERMITS, WITH A STRONG FOCUS ON MODULAR INDUSTRIALIZED ARCHITECTURE AND CONSTRUCTION, APPLYING BIOCLIMATIC AND SUSTAINABLE CONCEPTS.





# INFINISKI MANIFESTO 2009 - ELEVATIONS + SECTIONS

## CONSTRUCTION

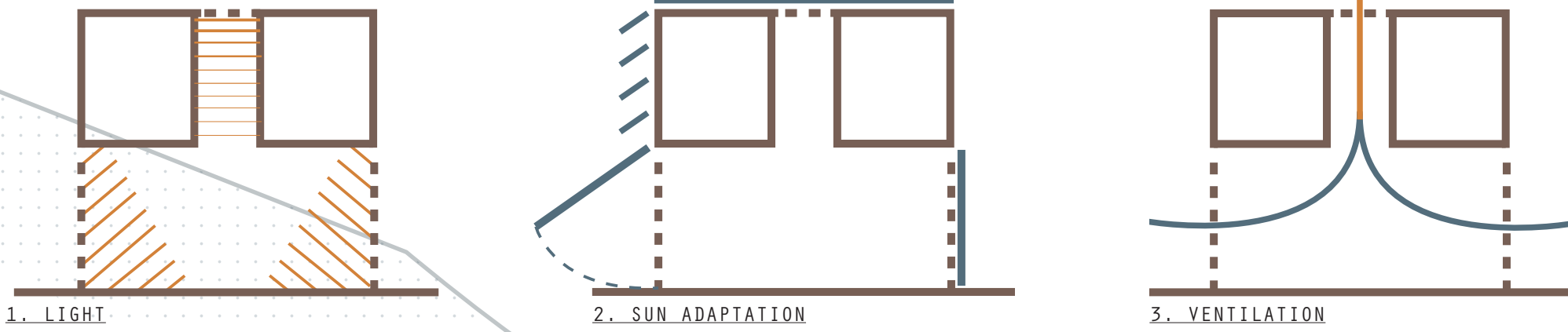


SECTION 1



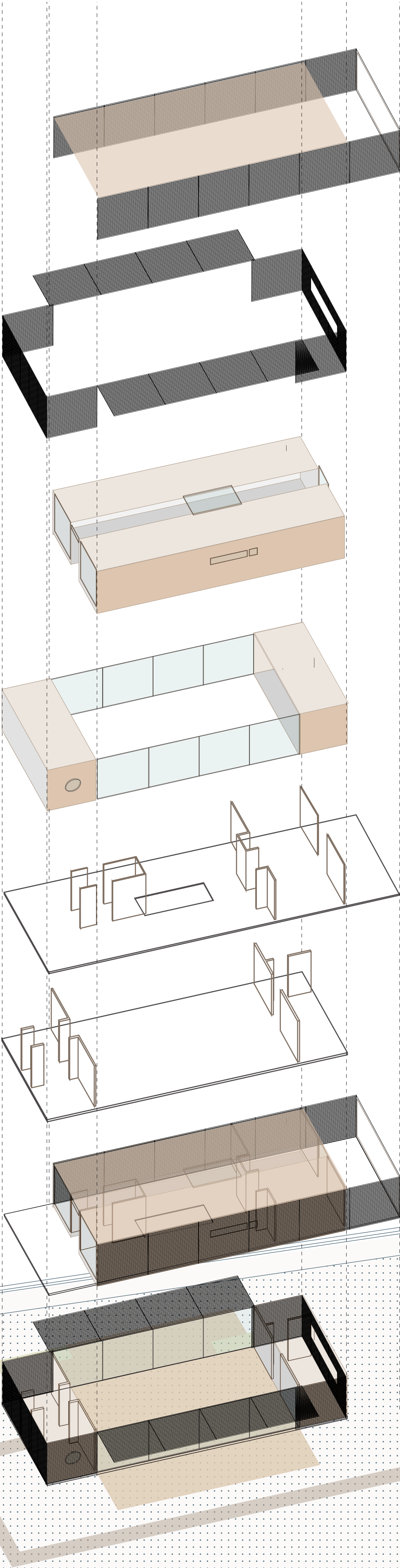
SECTION 2

## CLIMATE





# INFINISKI MANIFESTO HOUSE 2009 - CONSTRUCTION



WOODEN CLADDING: SHIELDS THE CONTAINERS FROM THE RAYS OF THE SUN - COULD ORIGINALLY BE OPENED ONE ONE SIDE TO HEAT UP THE CONTAINERS IN THE WINTER.

SUNSCREENS: SUNSCREEN ON THE ROOF SHIELDS CONTAINERS FROM THE SUN. LIVING ROOM WINDOWS ON GROUND FLOOR ARE SHIELDED BY WOODEN SUN SHADES.

SHIPPING CONTAINERS: RE-USED, SUPPOSEDLY MAKES ASSEMBLY CHEAPER AND FASTER. PROBABLY TOOK A LOT OF ADAPTION (CLEANING PESTICIDES, CREATING WINDOW OPENINGS), WHICH MAKES THE EASY, ECOFRIENDLY CHARACTER QUESTIONABLE.

WINDOWS: REUSED ALUMINIUM FRAMES, THERMO ISOLATED WINDOWS. THE PLACEMENT OF THE WINDOWS MAKES OPTIMAL USE OF THE CONTAINERS STRENGTH, WHILST ALLOWING MAXIMUM DAYLIGHT.

INTERIOR WALLS: GYPSUM BOARD, PLACED INSIDE THE STRUCTURE OF THE CONTAINERS TO DEFINE FUNCTIONAL SPACES (BATHROOM, KITCHEN), LEAVING LIVING SPACE FREE.

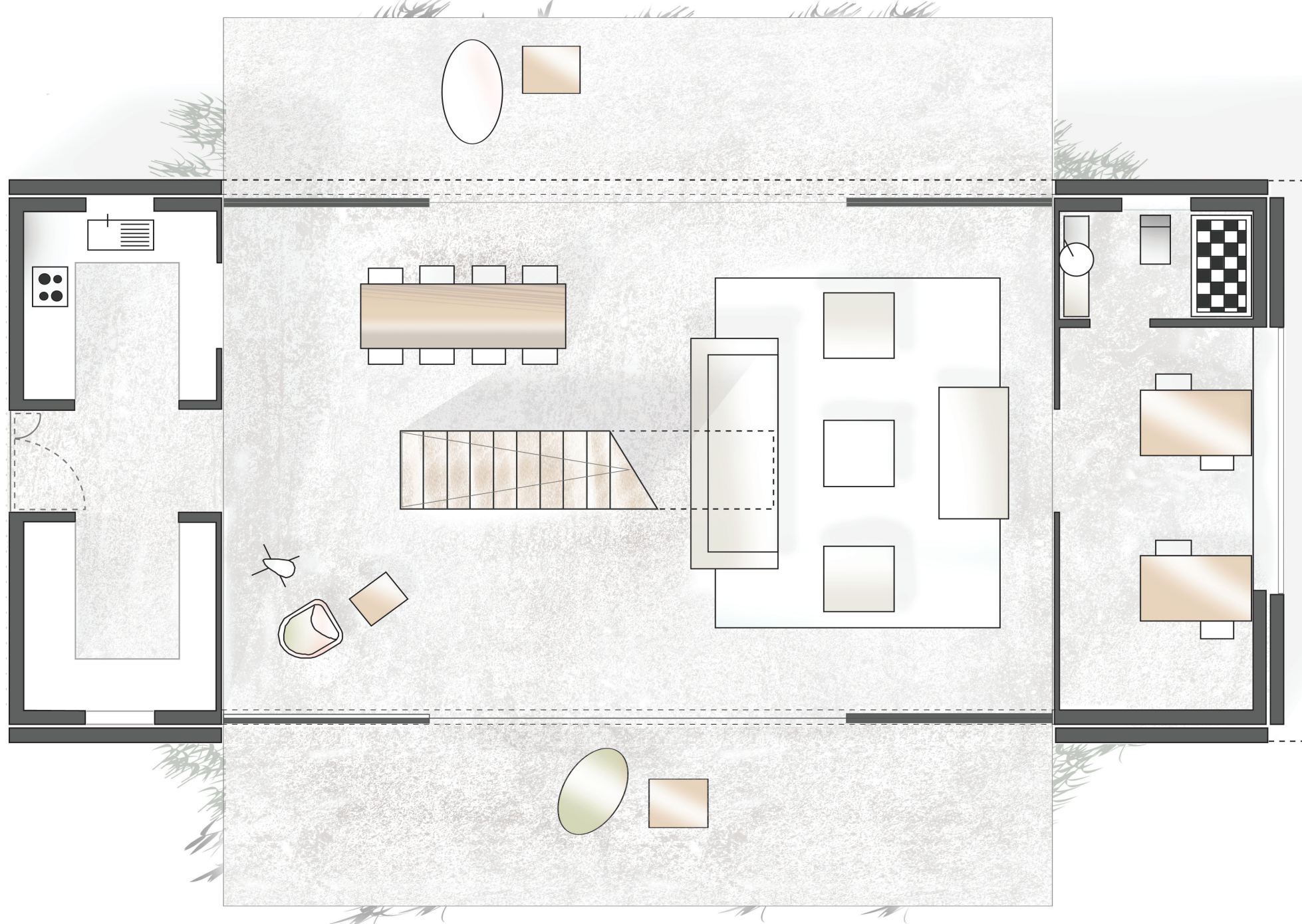
FLOORS: STRUCTURE PROVIDED BY CONTAINERS AND STEEL BEAMS (FIRST FLOOR) AND CONCRETE BEAMS (GROUND FLOOR). FINISHED WITH CONCRETE TILES, NON-RECYCLED.



# INFINISKI MANIFESTO HOUSE 2009 - FLOOR PLANS

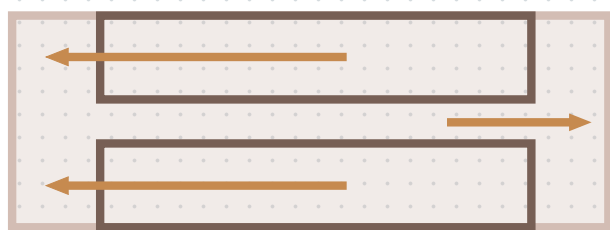


FIRST FLOOR

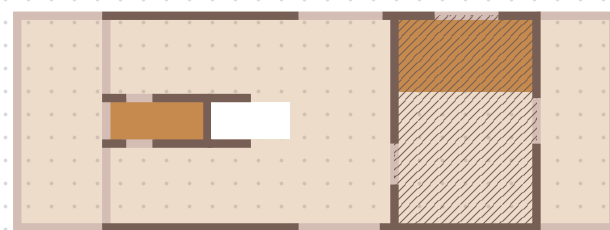


GROUND FLOOR

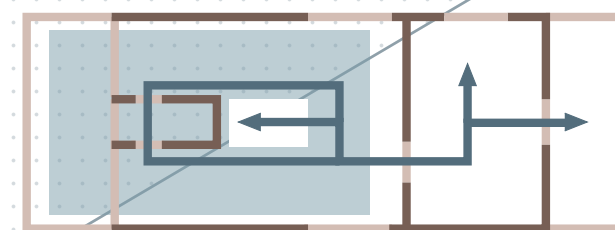
## SPATIAL DESIGN PROCESS



1. CONTAINERS PLACED, BASED ON VIEW ON THE LANDSCAPE



2. PROGRAM ADDED: SERVING SPACES IN CONTAINERS (ORANGE), PRIVATE ROOMS (SHADED) ORIENTATED TO THE NORTH.



3. ROUTING, ORGANISED AROUND CENTRAL AXIS, LEAVING MAXIMUM AMOUNT OF FREE SPACE.